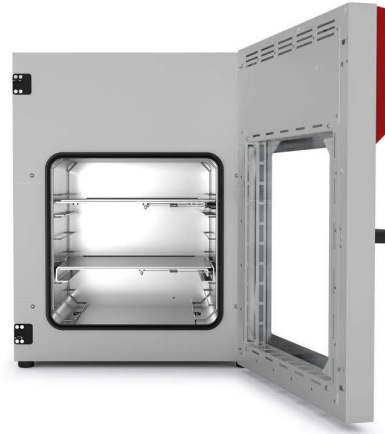


Series VDL | for flammable solvents

BINDER VDL series safety vacuum drying chambers ensure maximum safety when drying organic solvents. Explosion-protected unit with classification according to ATEX directive 2014/34/EU: EX II 2/3/- G IIB T3 Gb/Gc/- X.



VDL 115 model

BENEFITS

- Fast, gentle drying
- Optimum heat transfer through large thermal conducting plates
- Safe working thanks to ATEX-compliant safety concept
- Also option of modular complete system with vacuum pump and pump chamber

MAIN FEATURES

- Temperature range: Ambient temperature +9 °C to +110 °C
- ATEX conformity for units: EX II 2/3/- G IIB T3 Gb/Gc/- X
- Intuitive touchscreen controller with graphical pressure and temperature display
- Program-controlled drying monitoring with automatic ventilation at end of process
- Internal data logger, measured values can be read out in open format via USB
- Pressure control device for heating activated from < 100 mbar
- 2 aluminum expansion racks, can be custom-positioned
- Universal connection for ventilation with ambient air or inert gas
- DN 16 universal access port with small flange and blind flange, for positioning sensors or supply lines in the chamber
- Shatterproof, spring-mounted safety glass panel

AVAILABLE SIZES

Model	Interior volume [L]	Online data sheets
VDL 23	24	› go2binder.com/en-VDL23
VDL 56	55	› go2binder.com/en-VDL56
VDL 115	119	› go2binder.com/en-VDL115



TIPS & TRICKS







Benefit from our many years of experience, as demonstrated in our technical papers:

- Tips & Tricks: › go2binder.com/en-tips-tricks
 Case Studies: › go2binder.com/en-case-studies



Find all details online: go2binder.com/en-VDL

OPTIONAL EQUIPMENT

Expansion racks	The expansion racks ensure maximum heat transfer to the items to be dried. You can choose between aluminum and stainless steel racks.	
Analogue output for temperature and pressure	For external monitoring and evaluation of process parameters, option of integration into on-site systems.	
Universal ventilation	For the convenient selection of different ventilation types, with air or inert gas. The valves can be actuated in a targeted manner via the controller or the APT-COM Multi Management Software.	
Universal access port DN 40	For inserting and positioning sensors or supply lines in the vacuum chamber.	
Pump module with vacuum pump	The pump module lifts your vacuum oven to the optimum working height, it also significantly reduces the noise of the vacuum pump and protects the pump and glass material from mechanical damage. The pump in the module can be switched on and off using a switchable socket via the control of the vacuum furnace.	
Vacuum pumps	Our range of membrane pumps, chemistry membrane pumps, or speed-controlled chemistry membrane pumps is perfectly matched to the BINDER vacuum chambers in question. When connected to the pump chamber, the vacuum pump and flask are protected against mechanical damage.	
Multi Management Software APT-COM	Software for managing, recording and documenting device parameters is available in three versions: Basic, Professional and GLP.	
Services	You can access our installation, maintenance, calibration, validation, or warranty services by taking out a Maintenance Service Agreement or by simply getting in touch when you need us. More information is available in the accessories and services chapter.	
BINDER INDIVIDUAL	Using a BINDER series production product as a basis, we develop individual solutions as a single unit or in small batches. All products are tested, certified, and supplied with a full functional guarantee and warranty. More information is available in the accessories and services chapter.	

► All extras online go2binder.com/en-options

TECHNICAL DATA

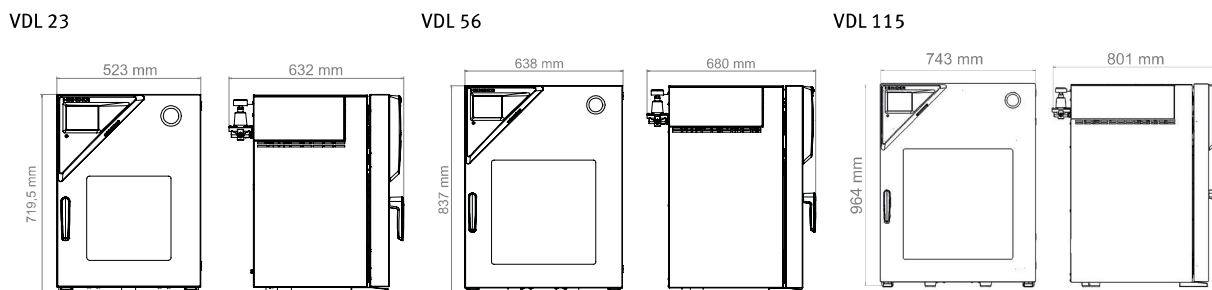
Description	VDL 23	VDL 56	VDL 115
Measures			
Interior volume [L]	24	55	119
Net weight of the unit (empty) [kg]	72	104	158
Permitted load [kg]	50	60	70
Load per rack [kg]	20	20	20
Wall clearance back [mm]	100	100	100
Wall clearance sidewise [mm]	70	70	70
Internal Dimensions			
Width [mm]	285	400	506
Height [mm]	285	400	506
Depth [mm]	295	343	460
Housing dimensions not incl. fittings and connections			
Width net [mm]	523	638	743
Height net [mm]	698	815	942
Depth net [mm]	413	461	581
Performance Data Temperature			
Temperature range +9 °C above ambient temperature to [°C]	110	110	110
Temperature variation at 100 °C [± K]	1.0	1.5	2.9
Temperature fluctuation [± K]	0.1	0.1	0.1
Heating-up time to 100 °C [min]	150	140	170
Electrical data			
Nominal power (version 120 V) [kW]	0.9	1.4	1.6
Nominal power (version 230 V) [kW]	0.9	1.4	1.6
Fixtures			
Number of shelves (std./max.)	2/4	2/5	2/6

ORDERING INFORMATION [Art. No.]

Further details: Go to www.binder-world.com > Search > Enter Article Number

Voltage	Option model	VDL 23	VDL 56	VDL 115
200...230 V 1~ 50/60 Hz	Standard	9630-0009	9630-0010	9630-0011
100...120 V 1~ 50/60 Hz	Standard	9630-0013	–	9630-0015
100...230 V 1~ 50/60 Hz	Standard	–	9630-0014	–

DIMENSIONS incl. fittings and connections [mm]



ORDERING INFORMATION OPTIONS

Bezeichnung	Beschreibung	VDL 23	VDL 56	VDL 115	Art.-Nr.
Additional universal ventilation	Additional universal connection for ventilation with ambient air or inert gas. Flow limiter thread (RP"), and connection with 3/8" male thread.	•	•	•	8612-0001
Analog output 4-20 mA	for temperature and pressure values (output not adjustable)	•	•	•	8612-0004
Calibration certificate, expanded	for temperature; for extending the measurement in center of chamber to include another test temperature	•	•	•	8012-1127
Calibration certificate, pressure	for digital pressure display, measurement at 100 mbar or at specified pressure (range 20 – 900 mbar)	•	•	•	8012-0440
Calibration certificate, temperature	for temperature, measurement in center of chamber at specified temperature	•	•	•	8012-1145
	temperature measurement incl. certificate, 15- 18 measuring points at specified temperature	•	•	•	8012-0919
	temperature measurement incl. certificate, 9 measuring points at specified temperature	•	•	•	8012-0916
Door gasket	made of FKM, silicone-free	•	–	–	8612-0007
		–	•	–	8612-0008
		–	–	•	8612-0009
Door lock	lockable door handle	•	•	•	8612-0002
Expansion racks	stainless steel expansion rack instead of standard aluminum expansion rack, incl. calibration	•	–	–	8612-0011
		–	•	–	8612-0012
		–	–	•	8612-0013
Temperature measurement of the specimen	with flexible Pt 100 sensor and digital specimen temperature display	•	•	•	8612-0006
Universal access port	Additional DN 40 small flange universal access port with blind flange, for positioning sensors or supply lines in the chamber.	•	•	•	8612-0003

ORDERING INFORMATION ACCESSORIES

Bezeichnung	Beschreibung	VDL 23	VDL 56	VDL 115	Art.-Nr.
APT-COM™ 4 BASIC-Edition	for simple logging and documentation requirements with up to 5 networked units. version 4, BASIC edition	•	•	•	9053-0039
APT-COM™ 4 GLP-Edition	for working under GLP-compliant conditions. Measured values are documented in a tamper-proof way in line with the requirements of FDA Regulation 21 CFR 11. version 4, GLP edition	•	•	•	9053-0042
APT-COM™ 4 PROFESSIONAL-Edition	convenient unit and user management built on the BASIC edition. Suitable for networking up to 100 units. version 4, PROFESSIONAL edition	•	•	•	9053-0040
	stainless steel	•	–	–	8009-1093
Expansion racks	aluminum	–	•	–	8009-1092
		–	–	•	8009-1091
		•	–	–	8009-1031
		–	•	–	8009-1030
		–	–	•	8009-1029
pH-neutral detergent	concentrated, for gentle remove of residual contaminants; 1 kg	•	•	•	1002-0016

Bezeichnung	Beschreibung	VDL 23	VDL 56	VDL 115	Art.-Nr.
Qualification documents	IQ/OQ documents – supporting documents for validation performed by customers, consisting of: IQ/OQ checklists incl. calibration guide and comprehensive unit documentation; parameters: temperature, CO ₂ , O ₂ , pressure, depending on unit				
	Digital in PDF format	•	•	•	7057-0001
	Hard copy inside folder	•	•	•	7007-0001
	IQ/OQ/PQ documents – supporting documents for validation performed by customers, according to customer requirements, PQ section added to qualification folder IQ/OQ; parameters: temperature, CO ₂ , O ₂ – or pressure, depending on unit				
Vacuum module with vacuum pump VP 4	Digital in PDF format	•	•	•	7057-0005
	Hard copy inside folder	•	•	•	7007-0005
	Chemical membrane pump with nominal pumping speed 1.9 m ³ /h, final pressure 12 mbar, with separator and emission condenser, ATEX conformity: suction chamber (pumped gases): II 2G IIC T3 X, exterior with inert-gas flushing: II 2G IIB T4 X, exterior without inert-gas flushing: II 3G IIB T4 X, motor: II 2G Ex d IIB T4 Gb, including all necessary parts for vacuum connection	•	–	–	8012-1970
Vacuum pump connection kit (ATEX)	230 V / 50 Hz option model	–	•	–	8012-1971
		–	–	•	8012-1972
	for vacuum pump VP 4; consisting of clamping rings, universal centering rings, transition piece, anti-static vacuum hose, union nut, and elbow	•	•	•	8012-0621
Vacuum pump VP 4	Chemical membrane pump with nominal pumping speed 1.9 m ³ /h, final pressure 12 mbar, with separator and emission condenser, ATEX conformity: Suction chamber (pumped gases): II 2G IIC T3 X, exterior with inert-gas flushing: II 2G IIB T4 X, exterior without inert-gas flushing: II 3G IIB T4 X, motor: II 2G Ex d IIB T4 Gb				
	230 V / 50 Hz option model	•	•	•	5013-0049