

TECHNICAL DATA

Description	KBWF 240	KBWF 720
Housing dimensions not incl. fittings and connections		
Width net [mm]	925	1250
Height net [mm]	1465	1925
Depth net [mm]	800	890
Internal Dimensions		
Width [mm]	650	973
Height [mm]	785	1250
Depth [mm]	485	576
Measures		
Interior volume [L]	247	700
Net weight of the unit (empty) [kg]	214	374
permitted load [kg]	100	150
Load per rack [kg]	30	45
Performance Data Temperature		
Temperature range with 100% illumination [°C]	10...60	10...60
Temperature range without illumination cassettes [°C]	0...70	0...70
Performance Data Climate		
Temperature range with 100% illumination [°C]	10...60	20...60
Temperature range without illumination cassettes [°C]	10...70	10...70
Humidity range with illumination cassettes, with illumination [% RH]	10...75	10...75
Humidity range without illumination [% RH]	10...80	10...80
Lightdata per Illumination Cassettes		
Daylight tubes [lx]	24	38
Daylight tubes [W/m²]	9000	13000
Fluora® growth lamps [W/m²]	23	36
Fluora® growth lamps [lx]	7500	10500
Arabidopsis lamps [W/m²]	32	43
Arabidopsis lamps [lx]	11000	14000
Electrical data		
Nominal power (version 230 V) [kW]	2.4	3.5
Fixtures		
Number of shelves (std./max.)	2/7	3/12
Number of illumination cassettes (std./max.)	2/2	3/3

ORDERING INFORMATION [Art. No.]

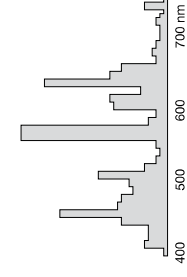
Further details: [Go to www.binder-world.com](https://www.binder-world.com) > Search > Enter Article Number

Voltage	Option model	KBWF 240	KBWF 720
200...240 V 1 50 Hz	Standard	9020-0336	9020-0337

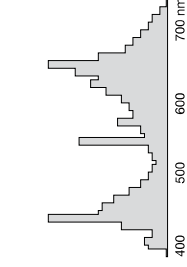
> You will find a selection of options, accessories and services suitable for each product on page 12

LIGHT SPECTRA

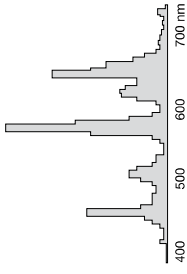
Daylight lamps
Light color 865 (standard)



Fluora® growth lamps
Light color 77 (optional)

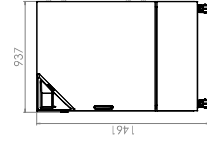


Arabidopsis lamps
Light color 842 (optional)



DIMENSIONS incl. fittings and connections [mm]

KBWF 240



KBWF 720

