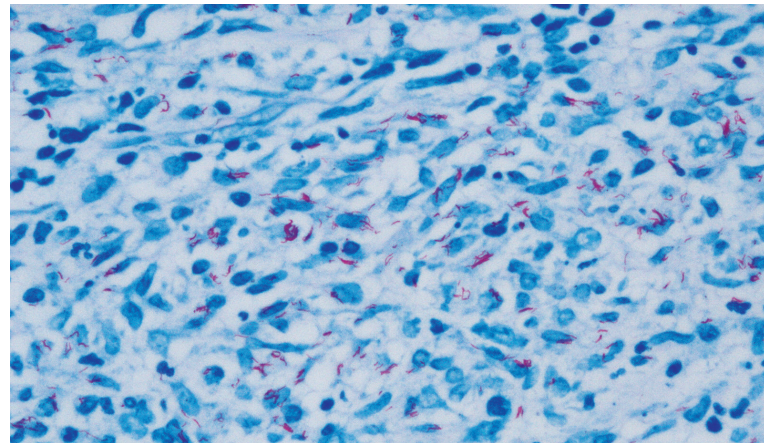
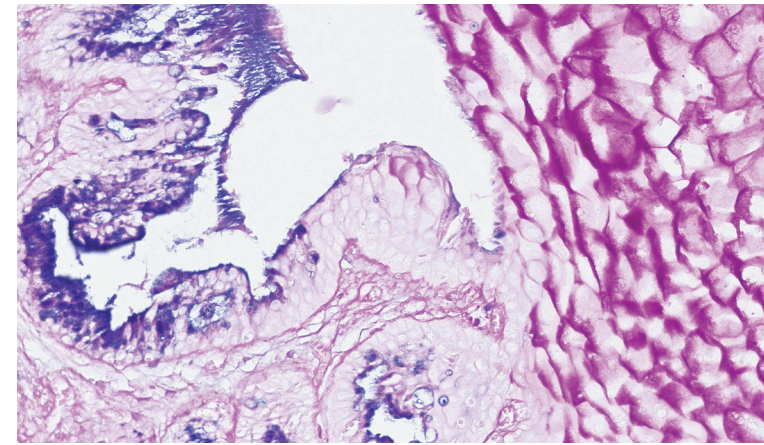


Artisan Special Stain Kits

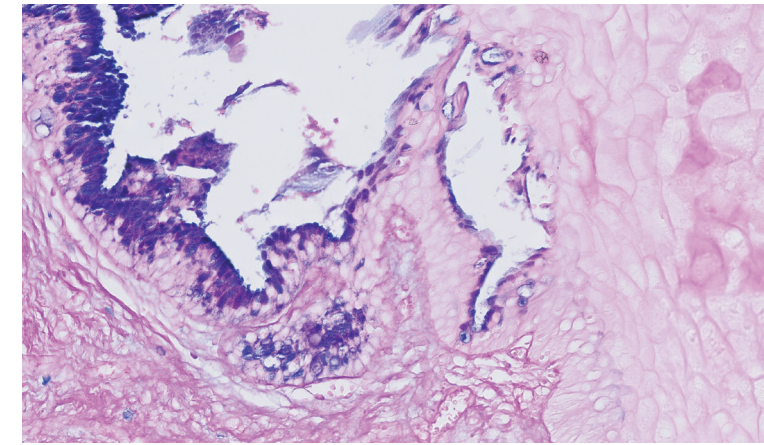
Keep your lab a step ahead with an extensive menu of high-quality, ready-to-use stain kits and staining protocols.



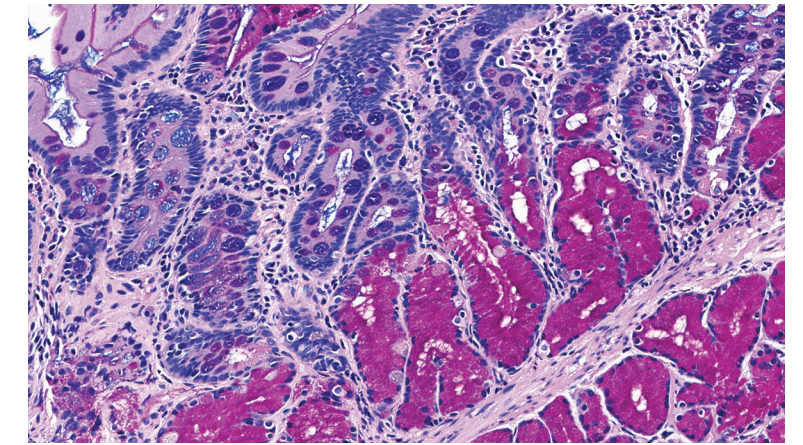
Acid-Fast Bacteria, Code No. AR162.



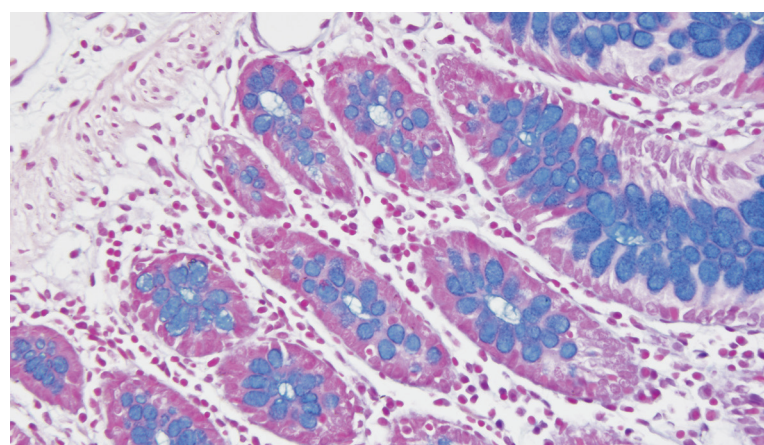
Alcian Blue/PAS, Code No. AR169.



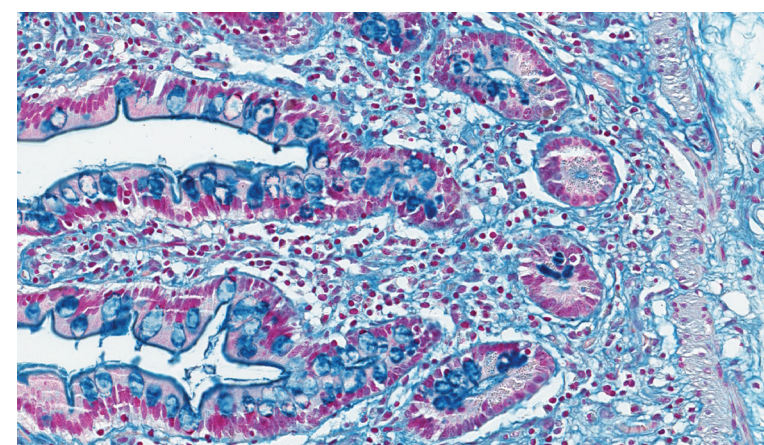
Alcian Blue/PAS with Alpha-Amylase, Code No. AR169 (with AR171).



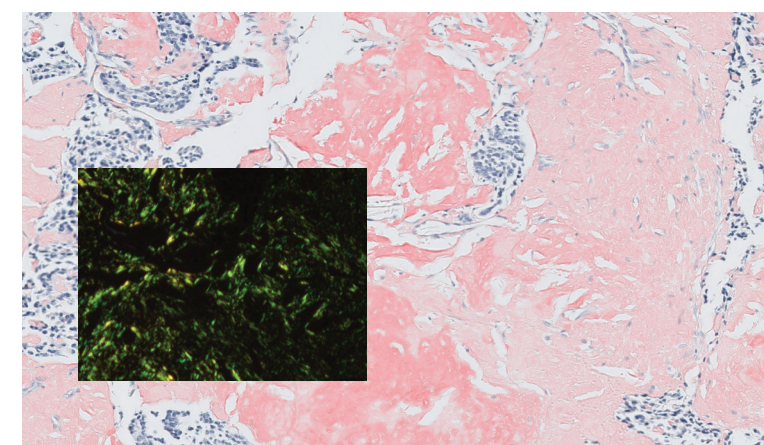
Alcian Blue/PAS/Hematoxylin, Code No. AR178.



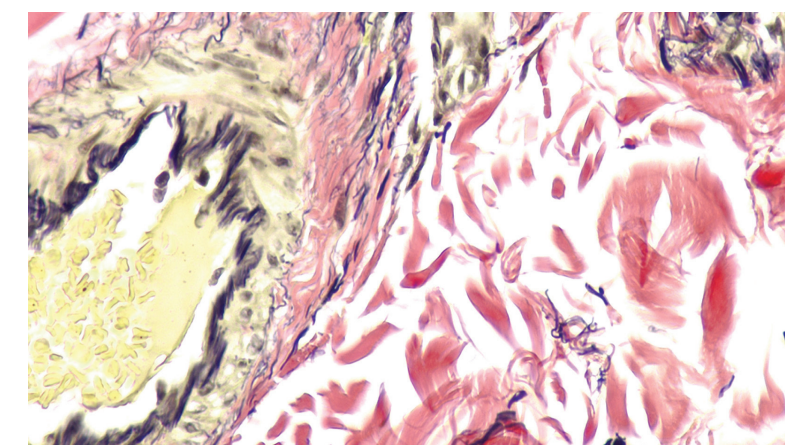
Alcian Blue pH 2.5, Code No. AR160.



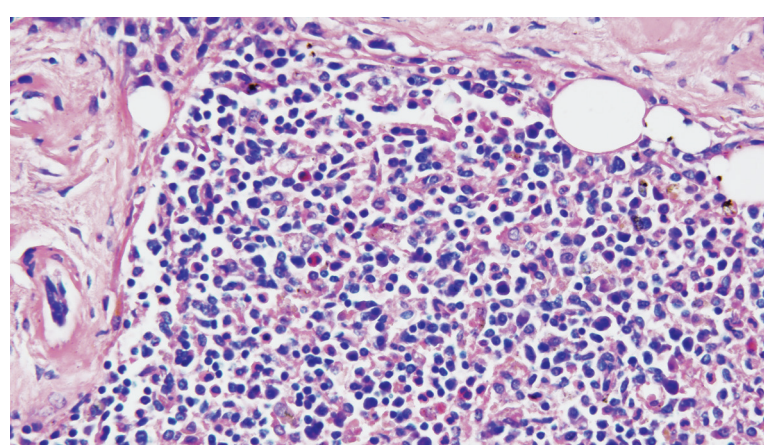
Colloidal Iron, Code No. AR307.



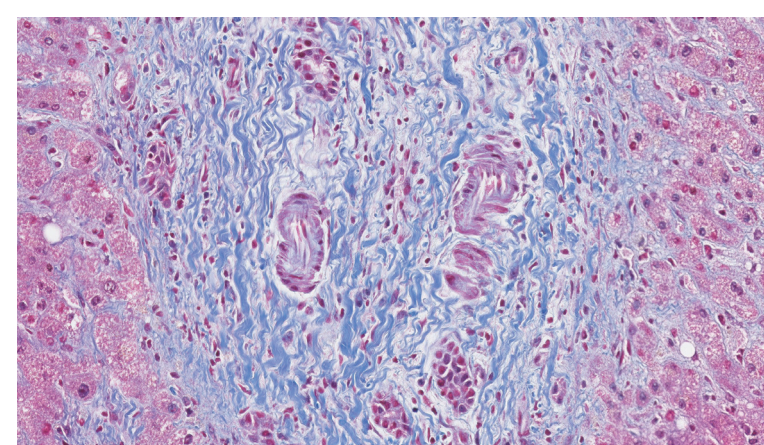
Congo Red, Code No. AR161.



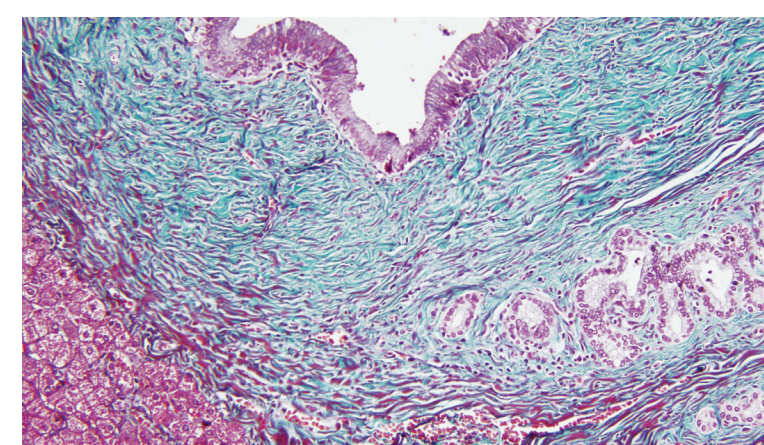
Elastic, Code No. AR163.



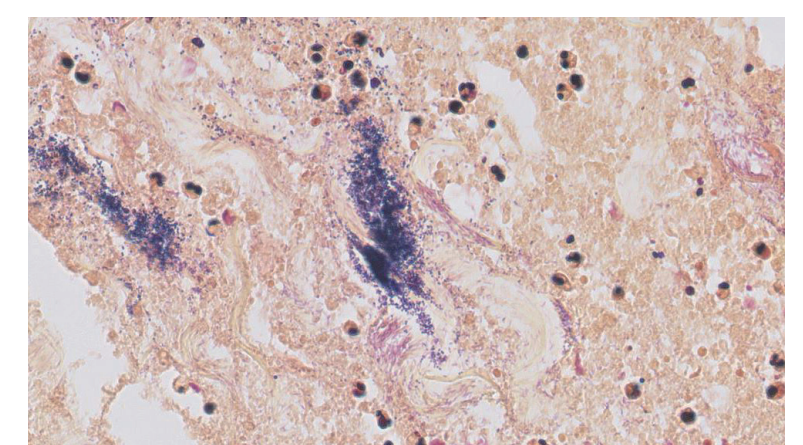
Giemsa, Code No. AR164.



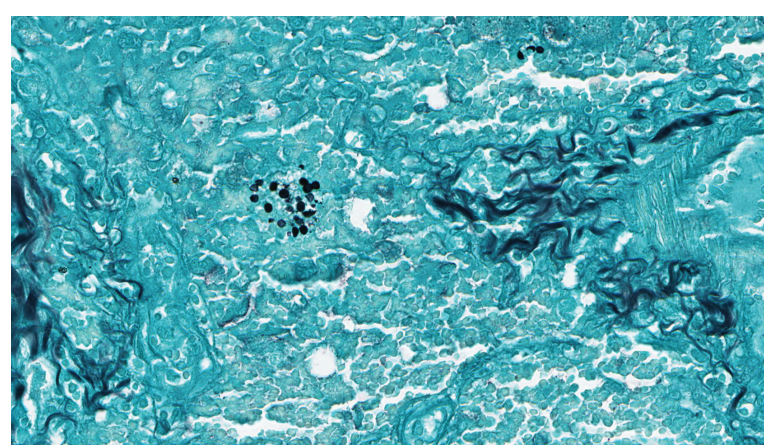
Gomori's Blue Trichrome, Code No. AR167*.



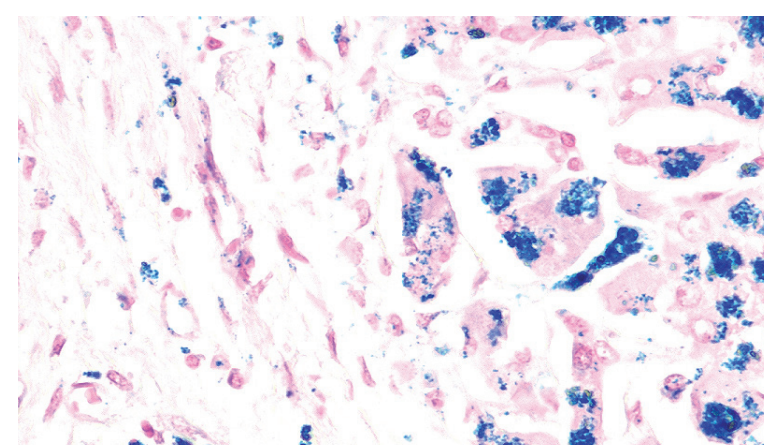
Gomori's Green Trichrome, Code No. AR166.



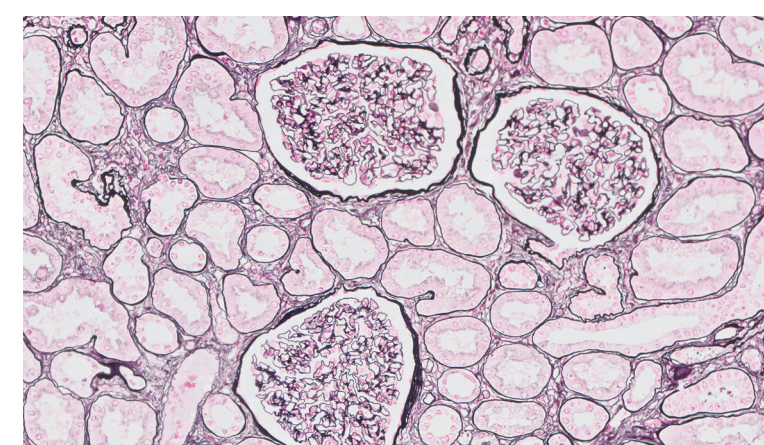
Gram Yellow, Code No. AR306.



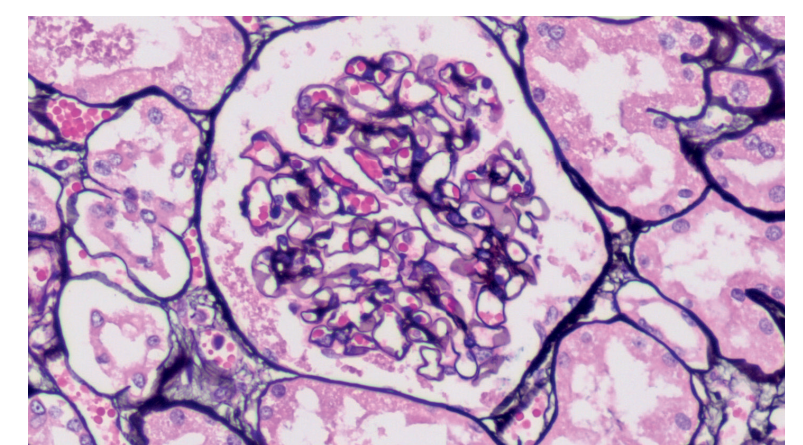
Grocott's Methenamine Silver, Code No. AR176.



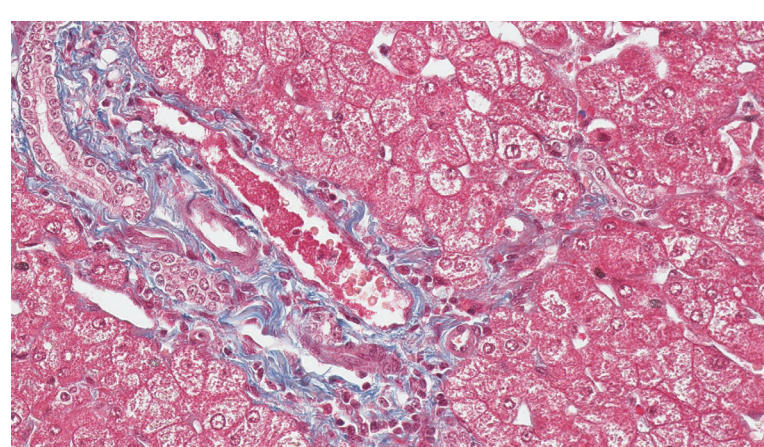
Iron, Code No. AR158.



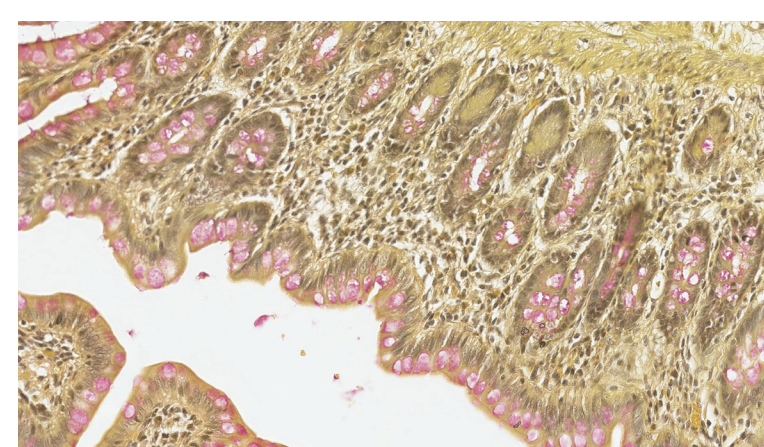
Jones' Basement Membrane, Code No. AR180.



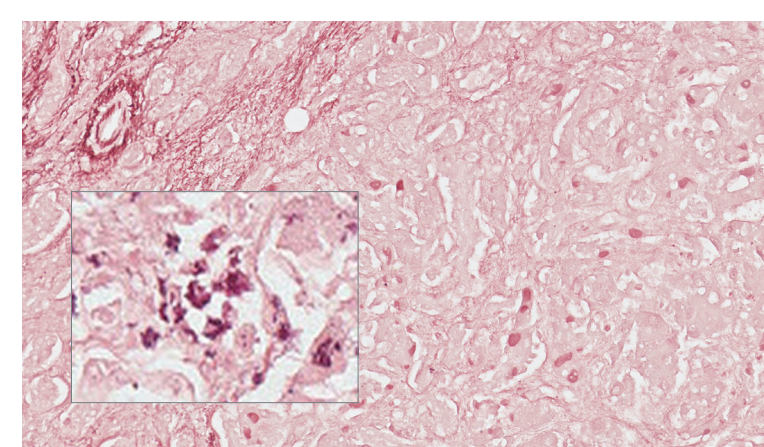
Jones' Basement Membrane H&E, Code No. AR480.



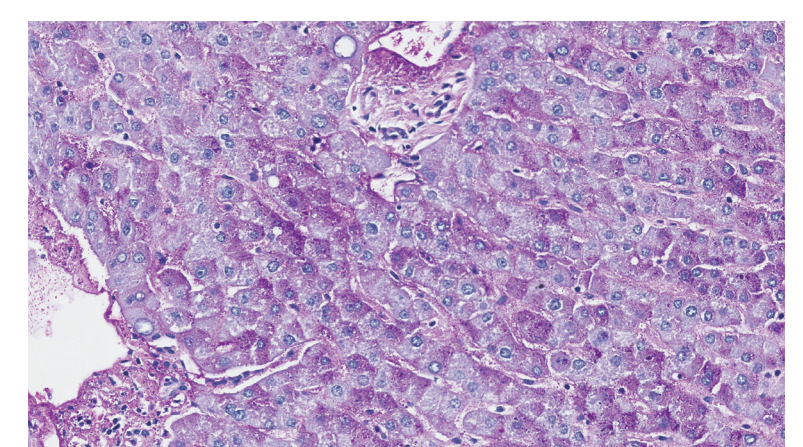
Masson's Trichrome, Code No. AR173.



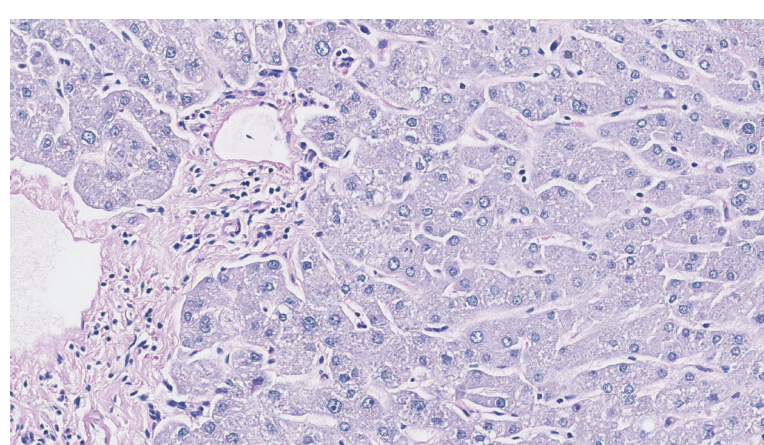
Mucicarmine, Code No. AR168.



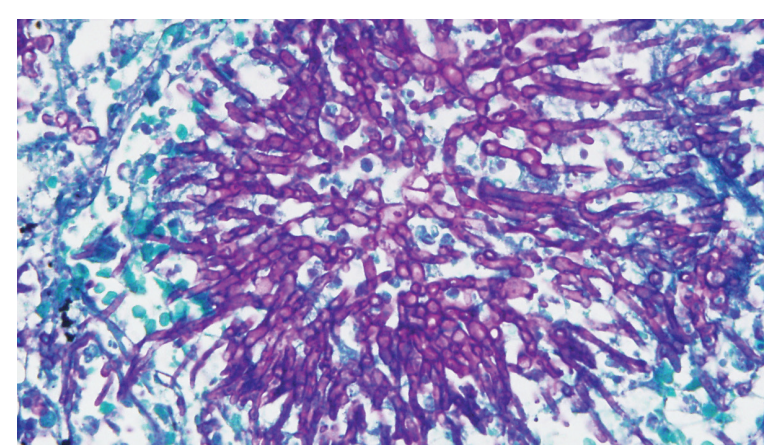
Orcein, Code No. AR313*.



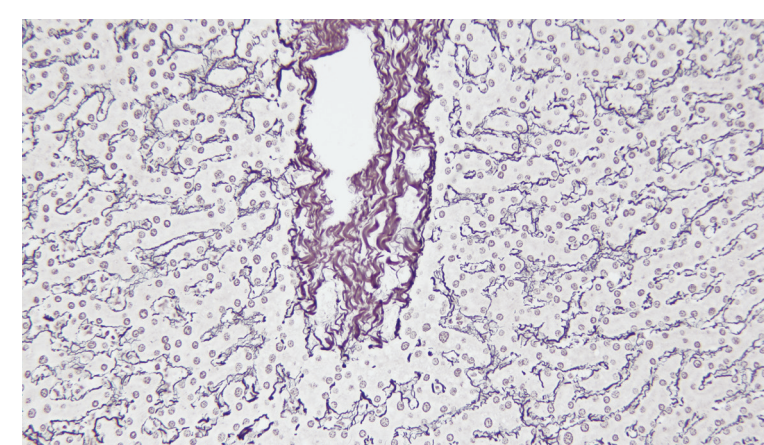
Periodic Acid-Schiff (PAS), Code No. AR165.



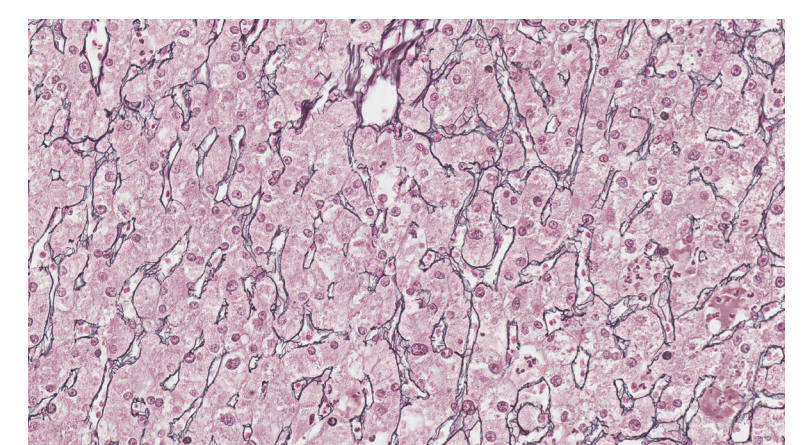
Periodic Acid-Schiff with Alpha-Amylase, Code No. AR165 (with AR 171).



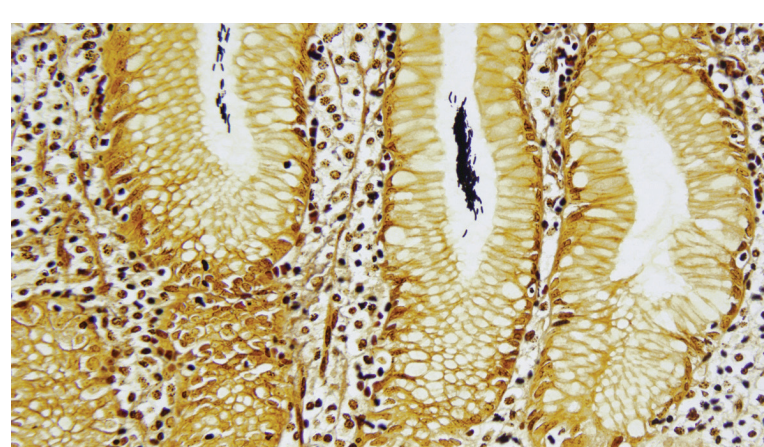
Periodic Acid-Schiff Green, Code No. AR172.



Reticulin/No Counterstain, Code No. AR182.



Reticulin/Nuclear Fast Red, Code No. AR179.



Warthin-Starry, Code No. AR181.

* Orcein, Code No. AR313 and Gomori's Blue Trichrome, Code No. AR167 are not available in all markets.