

# Hurricane Series Concentration Evaporator

Think Smart Work Better



# Hurricane -EX



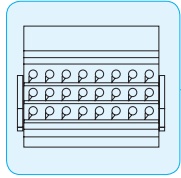
## ■ Hurricane Series Concentration Evaporator

Hurricane series is a microprocessor-controlled evaporation system for simultaneous, automated concentration of multiple samples with unattended operation, convenience, high speed and economical cost.

## ■ Applications

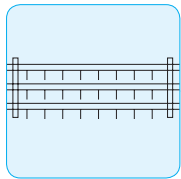
- Pharmaceutical and Biotech
- Clinical Laboratories
- Contract Research Organizations
- Environmental Testing Facilities
- Forensic and crime laboratories
- Drugs of Abuse testing Facilities
- Food and Beverage companies
- Agrochemical companies
- Government and Academic Institutions

## ■ Features



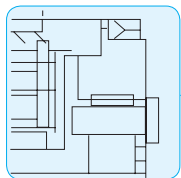
### 1. Heat-Treat Tempered Glass

- Improvement of the corrosion resistance against strong Alkali and Acid.



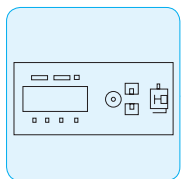
### 2. Accurate Gas Nozzles in the Manifold

- Long distance gas injection by accurate manifold & nozzles.



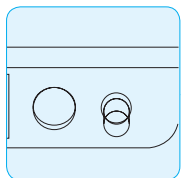
### 3. Evaporated Solvent Exhaust System

- Removal of noxious solvent by internal blower.



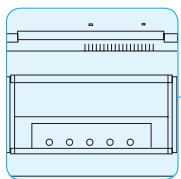
### 4. Microprocessor Control System

- Perfect concentration condition and feedback control by digital micro controller.



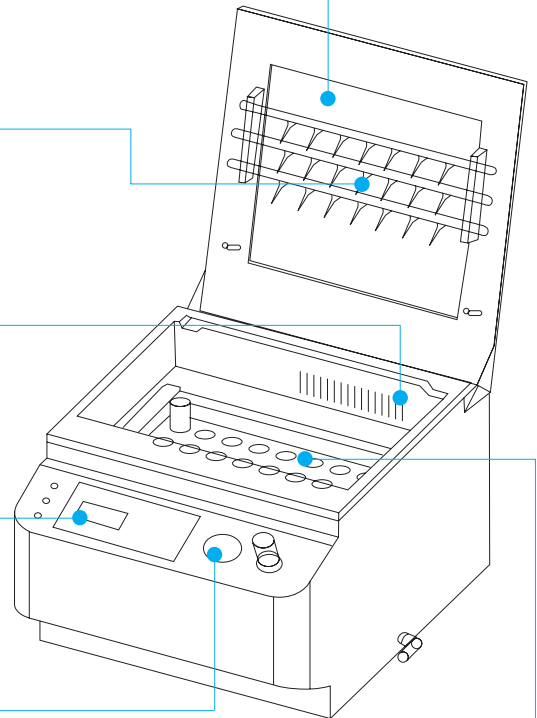
### 5. High Precise Regulator

- Easy to control pressure precisely by a high performance regulator.



### 6. Optimal Temperature Control

- Constant temperature in stable by a digital sensor & feedback relay.



## ■ Others

### • Hurricane-Eagle Concentration Evaporator

- Tube capacity : simultaneously Rack type 50 tubes

### • Hurricane-Elcap Concentration Evaporator

- Tube capacity : simultaneously 21 tubes / 100ml, 15 tubes/150ml 12 tubes / 200ml, 8 tubes / 300ml

### • Windy-i Concentration Evaporator

- Tube capacity : 6 heating block type tubes( simultaneously/respectively)



These Products are manufactured by Young Lin  
 ISO 9001-certified facility that is periodically  
 audited by the registering body to ensure compliance

## Technical Specifications

	Hurricane- EX	Hurricane- Eagle	Hurricane- Elcap	Windy- i
<b>Sample Volume</b>	Max. 30ml	2ml to 70ml	100ml to 300ml	8ml
<b>Number of Samples</b>	Max. 24 samples	Max. 50 samples	Max. 21 samples	Max. 6 samples
<b>Time Programming Range</b>	5 min upto 24 hrs (Increment : 5 min)	5 min upto 24 hrs (Increment : 5 min)	5 min upto 24 hrs (Increment : 5 min)	5 min upto 24 hrs (Increment : 5 min)
<b>Water Bath Temperature</b>	Ambient to 90°C (Increment : 5min)	Ambient to 90°C (Increment : 5min)	Ambient to 90°C (Increment : 5min)	Ambient to 90°C (Increment : 5min)
<b>Water Bath Size(mm)</b>	290 X 140 X 160	355 X 195 X 170	355 X 195 X 170	Heating Block type 200 X 40 X 90
<b>Gas Supply Flow</b>	15L/min	15L/min	15L/min	12L/min
<b>Inlet Pressure</b>	Max. 140 psi	Max. 140 psi	Max. 140 psi	Max. 90 psi
<b>Power</b>	220V at 50/60 Hz	220V at 50/60 Hz	220V at 50/60 Hz	220V at 50/60 Hz
<b>Dimensions(mm)</b>	365 X 460 X 260	540 X 520 X 275	540 X 520 X 275	300 X 210 X 200
<b>Weight</b>	20Kg	30kg	30kg	10kg



**YOUNG LIN INSTRUMENT CO., LTD.**

Young Lin Bldg., 899-6, Hogye-dong, Anyang, 431-836, Korea  
 TEL : 82-31-428-8700 / FAX : 82-31-428-8779

E-mail : [export@younglin.com](mailto:export@younglin.com) Homepage : [www.younglin.com](http://www.younglin.com)