

Easy-VOC™

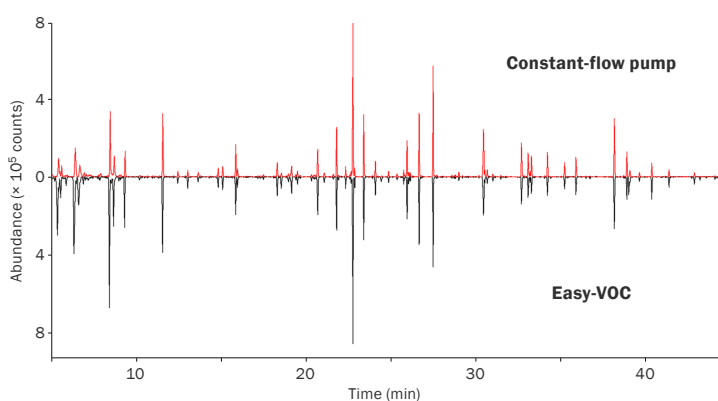
Easy-VOC is a manually-operated pump kit that allows rapid 'grab-sampling' of precise volumes of air or gas directly onto sorbent tubes, for analysis using thermal desorption (TD).

Wide analyte range

Grab-sampling onto sorbent tubes using Easy-VOC is compatible with a much wider analyte range than is possible with canisters – typically C₃ to n-C₃₂, plus many polar and reactive species. In addition, tubes are far less expensive and much easier to transport.

No need for calibration

Easy-VOC samples air directly onto single-bed or multi-bed sorbent tubes (¼" or 6 mm o.d.), without the need for calibrated pumps. Performance in many applications is very similar to constant-flow pumps – reproducibilities are <5% RSD for most compounds.



Analysis of air from burning incense sticks using Easy-VOC and a constant-flow pump, showing equal performance.



Product highlights

- Robust, reliable sampling of VOCs.
- Portable – no electrical pumps needed.
- Wider analyte range than canisters.
- Fixed-volume sampling – no need to calibrate.
- Intrinsically safe, and compatible with a wide range of application-specific sorbent tubes.

Variable sampling volume

Sampling is in precise units of 50 or 100 mL, with larger volumes achieved by taking multiple samples. Optimum volumes depend on analyte concentration and the detector used, but typically 500 mL is more than enough for monitoring >1 ppb using quad MS.



“ I love the Easy-VOC pump and the carrying case. Its field portability was critical to the methods we used for sampling air in the Amazon rainforest canopy – I climbed towers, trees, and canopy walkways with the Easy-VOC system. ”

Dr Angela Jardine

Instituto Nacional de Pesquisas da Amazônia, Manaus, Brazil

Reduced analyte breakthrough

The relatively small sample volumes collected by Easy-VOC reduce the risk of analyte breakthrough, and simplify water management for humid air streams – making Easy-VOC ideal for a wide range of challenging applications.

Key applications



Environmental monitoring



Emissions from fragranced products



Remote locations



Packaged goods



HOW TO
Use the Easy-VOC
grab-sampler

Scan the QR code or follow the link below to watch our short video on the Easy-VOC:
<http://chem.markes.com/EasyVOC>



Simple manual operation

- 1 The sample tube is fitted into the Easy-VOC inlet.
- 2 The sample volume required is selected by aligning markings on the plunger and barrel.
- 3 The sample is taken (this takes ~5 seconds for a 50 mL sample and ~10 seconds for 100 mL).
- 4 The plunger is returned to its original position, and if necessary further samples are taken onto the same tube. A counter on the barrel allows you to record the number of samples taken.



Portability

Easy-VOC is supplied as a kit that contains:

- Easy-VOC pump
- CapLok™ tool for simplified capping and uncapping
- Carry-case for secure transport.



Order your Easy-VOC today

Part number: C-EZVOCPO

Please contact your regional distributor or one of our offices (details below).



Markes International

UK: Gwaun Elai Medi-Science Campus, Llantrisant, RCT, CF72 8XL

USA: 2355 Gold Meadow Way, Gold River, Sacramento, California 95670

Germany: Bieberer Straße 1–7, 63065 Offenbach am Main

P.R. China: Unit 1002, Building 1, No. 418 Guilin Road, Shanghai 200233

E: enquiries@markes.com **W:** www.markes.com

T: +44 (0)1443 230935

T: +1 866-483-5684 (toll-free)

T: +49 (0)69 6681089-10

T: +86 21 5465 1216

