

Produce Results up to 4x Faster

Agilent StreamSelect LC/MS system





Are you struggling to meet the challenges of increased sample volumes and shorter turnaround times? Can you benefit from a system that offers easy adoption and even easier method development? Do you want to maximize your LC/MS investment?

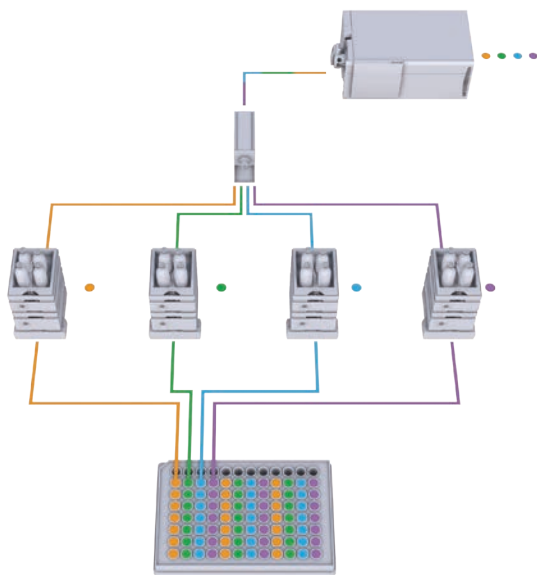
Then, the Agilent StreamSelect system is for you.

Boost Lab Productivity Without Compromising Data Quality

Sample volumes are increasing, and demands for higher throughput are growing. You need the results provided by LC/MS—but you don't have the budget or space for four individual LC/MS systems.

Expand your laboratory capabilities with the Agilent StreamSelect LC/MS system

StreamSelect technology lets you multiplex up to four liquid chromatography systems with a single mass spectrometer, allowing full utilization of the detector. This configuration is also fail-safe in that your workflow will continue uninterrupted, even if an LC goes down. This innovative solution improves workflow efficiency with:



Intuitive automation software seamlessly controls the system—greatly enhancing throughput.

- **Higher throughput.** Generate results two, three, even four times faster, compared to standard LC/MS systems.
- **Intuitive data collection, processing, and reporting** with MassHunter software.
- **Intelligent error handling.** When one HPLC goes down, the software seamlessly switches to the next LC in the system. No dropped samples, no lost data. Peace of mind.
- **Superior data quality,** with equivalent performance across all streams.
- **Increased flexibility.** Run single or multiple methods.
- **Hassle-free online sample cleanup.**
- **Cost-effective implementation.** Easily transfer your existing Agilent LC/MS methods.
- **Excellent return on investment.** Efficient use of a single MS lowers your cost-per-sample.

Increase Your Throughput and Lower Your Stress

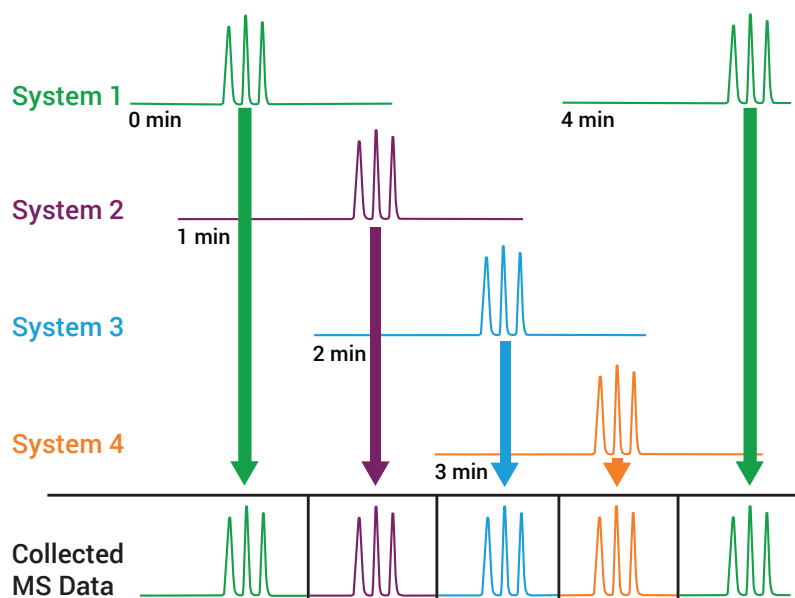


One of your most expensive lab resources—your mass spectrometer—is often idle when used in a traditional single LC configuration. Meanwhile, samples are stacking up, waiting for the next run.

Maximize the use of your mass spectrometer

Agilent StreamSelect LC/MS software sends only the analytes you specify from each LC run to the MS for analysis. Staggering injections from multiple LCs sends more samples to the MS—resulting in more samples analyzed in the same timeframe.

Increase productivity by two, three, even four times over traditional MS



The Agilent StreamSelect LC/MS system can collect four times the results in the same time window by reducing MS idle time.

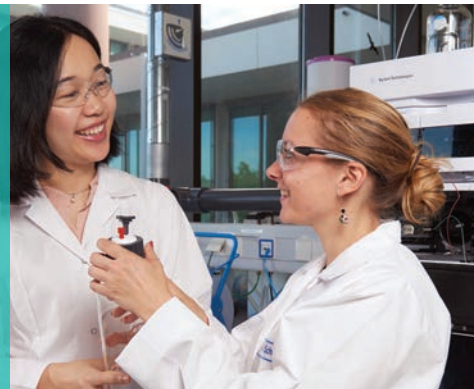
StreamSelect system core configuration

- MassHunter StreamSelect software
- Up to:
 - Four Agilent 1260 Infinity II binary pumps or
 - 1290 Infinity II high-speed pumps and
 - 1290 Infinity II multicolumn thermostats
- StreamSelect CTC autosampler with up to four injection ports
- Agilent 6400 Series triple quadrupole LC/MS system

Add functionality with online sample cleanup

- Use workflow enhancements like trap-and-elute or elution loop to remove matrix
- Add up to four Agilent Infinity II quaternary or flex pumps
- Add column switching valves and capillary kits

Robust Sample Handling



No more lost samples

MassHunter software maintains direct communication between all HPLC and mass spectrometer components. The software seamlessly orchestrates all LC functions and MS acquisition, resulting in:

- Accurate tracking of samples from each independent LC to the MS
- No misidentification of MS data files
- Sample handling peace of mind

Easily set system pressure limits

Pump pressure monitoring lets you set thresholds for out-of-range pressures throughout the acquisition run—accurately reflecting the actual pressure changes of LC gradient conditions.

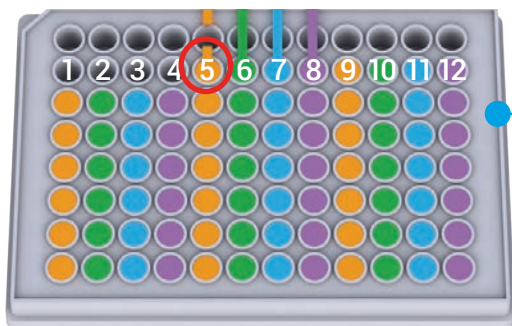
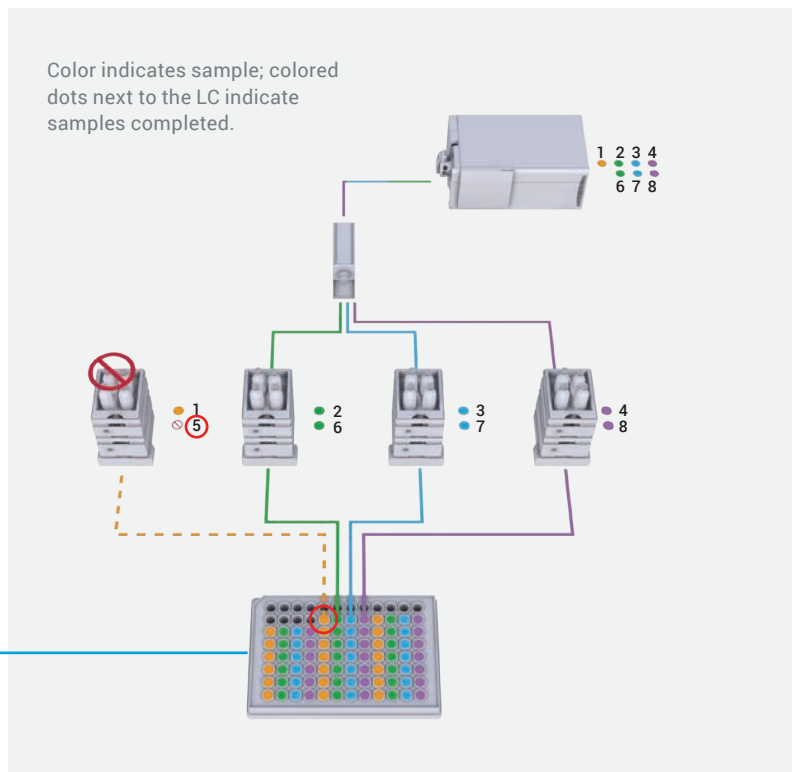
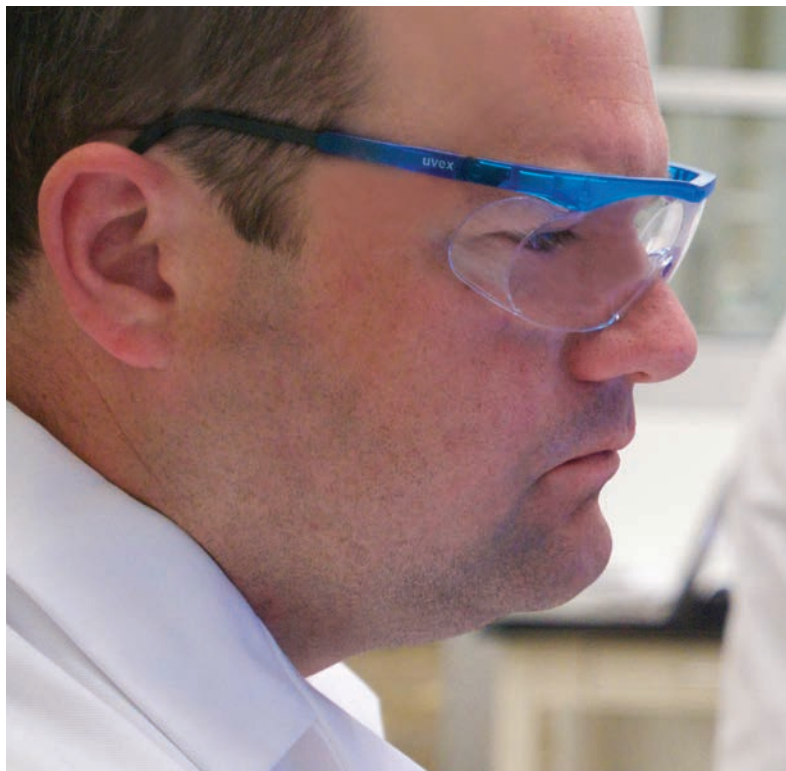


Intelligent Error Handling

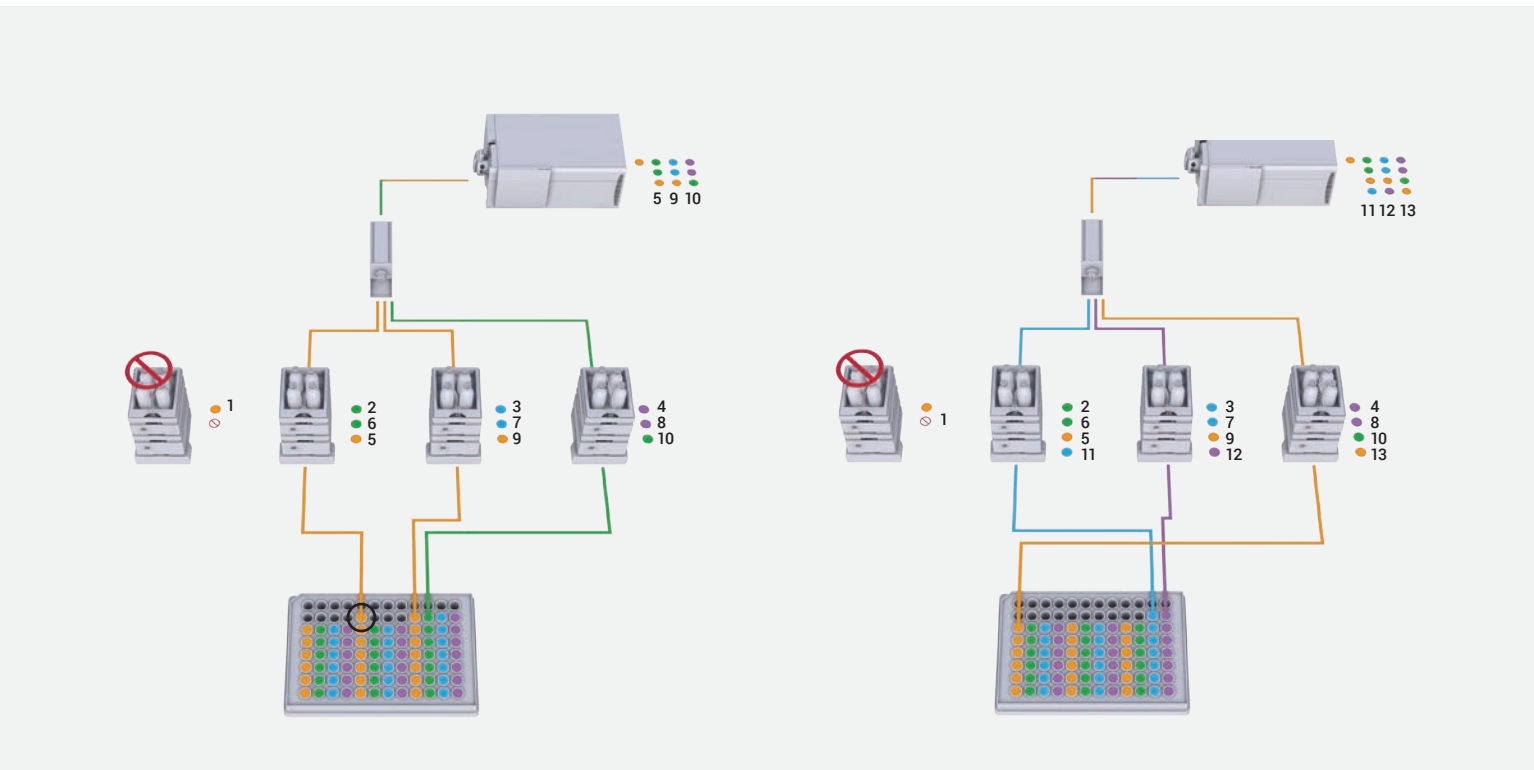
No interruptions. No data loss.
No user intervention.

Agilent intelligent error handling makes sure that no samples are dropped. If one LC needs service, the sample intended for that LC is redirected to the next available LC. All other samples are sent to the next LC in the sequence, so none are missed.

- StreamSelect automatically compensates for unexpected LC issues—like solvent leaks or pump overpressure—diverting the sample to the next available LC stream.
- No worrying about sample loss: StreamSelect keeps you running.
- No productivity loss overnight or during the weekend.

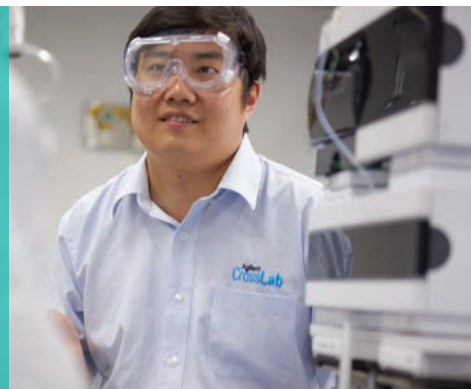


Here, there was a problem running sample number 5. Ordinarily, that would result in a dropped sample.



With StreamSelect, sample number 5 is redirected to the next available LC. Samples 9 through 13 are sent to the next LC in sequence.

More Results, Same High-Quality Data



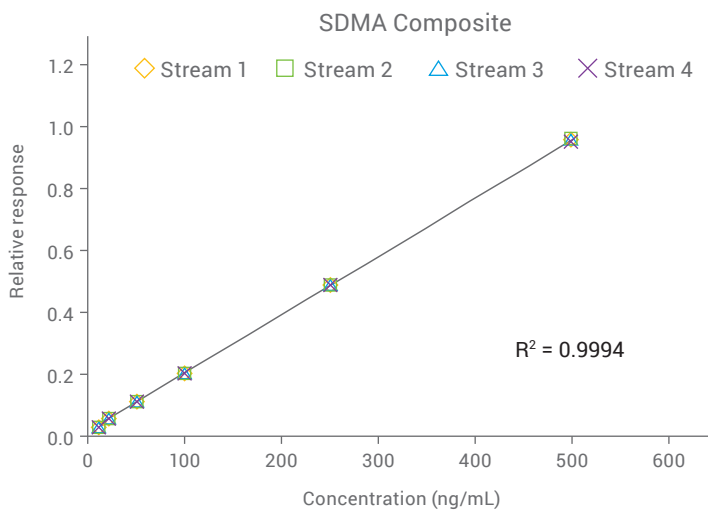
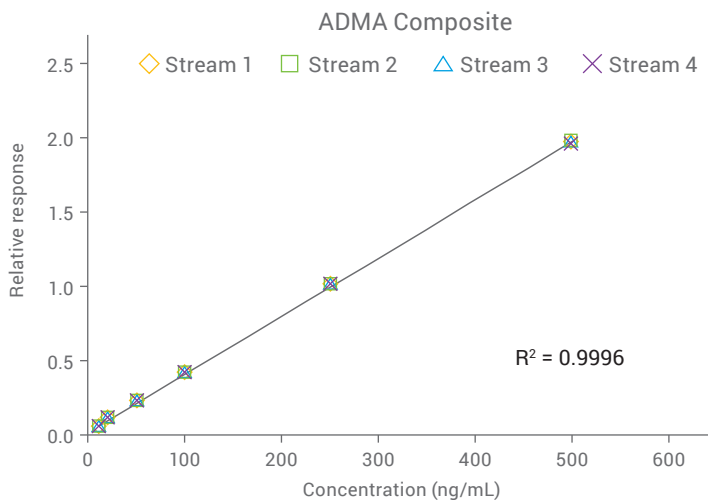
Superior data quality on every stream

The StreamSelect system delivers the superior analytical performance you expect from Agilent. With the reliability of the Agilent InfinityLab LC Series—plus solid triple quadrupole MS—you can count on:

- Equal quantitative performance across all streams
- The same quantitative performance after intelligent error handling
- Reproducibility, robustness, and reliability

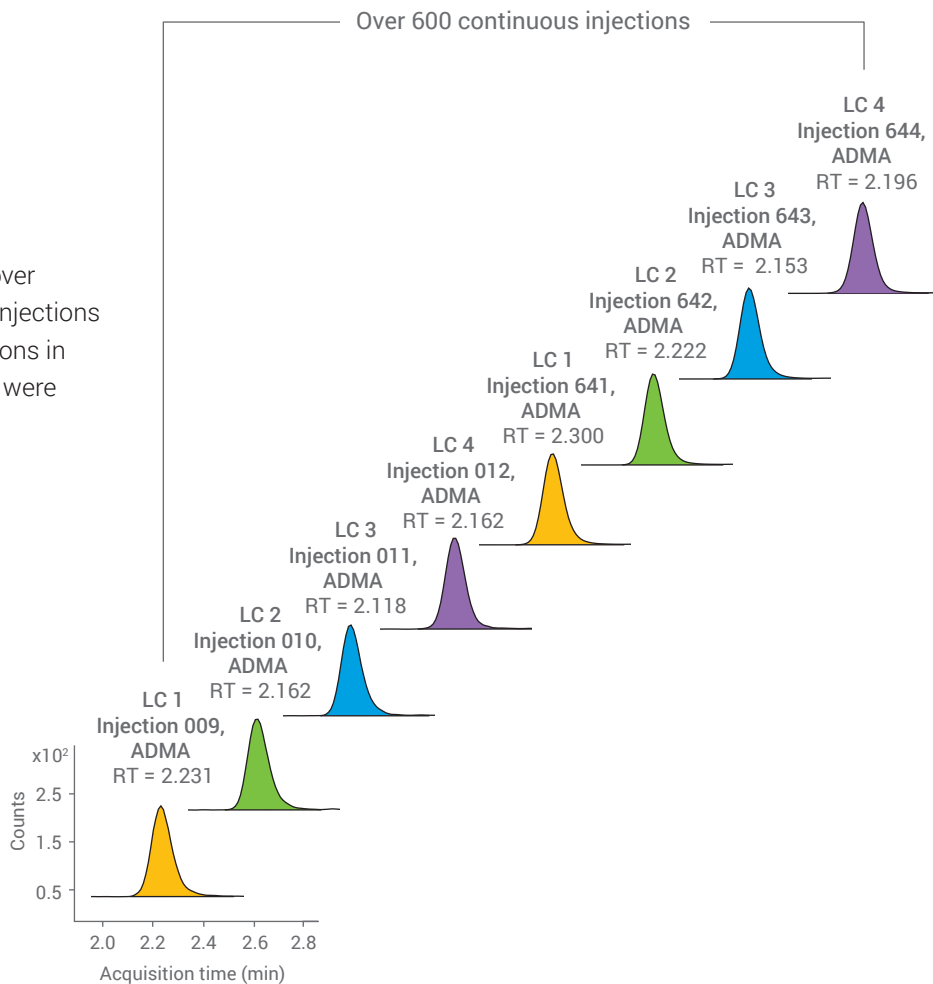
Accurate quantitation

Simultaneous analysis of asymmetric and symmetric dimethyl arginine (ADMA and SDMA, respectively) from four LC streams, with combined calibration curve. The four parallel LC systems displayed excellent linearity and quantitative agreement.



Reproducible performance

Retention time reproducibility of ADMA over 600 injections across four LC streams. (Injections 1 to 8 were blanks, 2 per stream.) Deviations in retention time between the four streams were minimal, resulting in less than 5% RSD.



The Agilent StreamSelect system

Sample Throughput Needs	StreamSelect Solution Choice	Productivity Improvement	Online Sample Cleanup SPE: Trap-and-Elute or Elution Loop
Medium 100s/day	2-Stream	2X	Supported
High 100s–1000s/day	3-Stream 4-Stream	3X–4X	Supported

Integrated. Intuitive. StreamSelect Software

Complete system information at your fingertips

User-friendly automation software coordinates the integrated system. The StreamSelect console gives you instant access to:

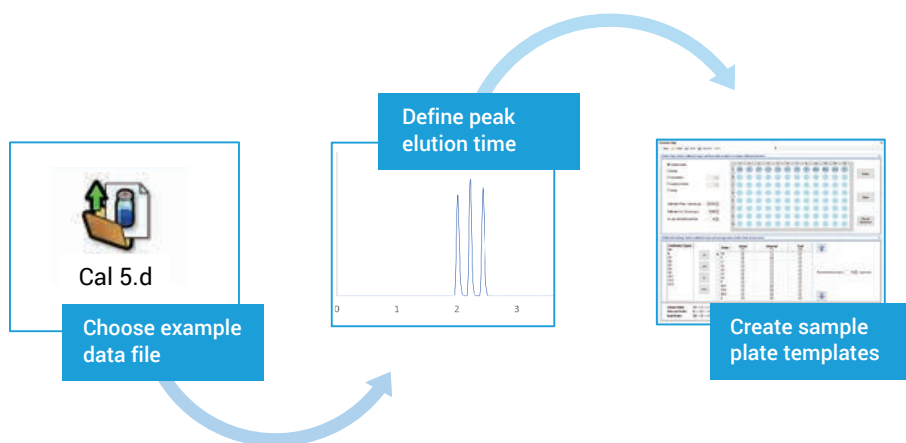
- Status of all LC streams
- Mass spectrometer chromatograms
- Sample batch queue
- Customizable window arrangement



Easy adoption, easier method development

You can easily implement your existing LC/MS methods in StreamSelect. Simply load the data file, define the window of interest for your analytes, and create plate templates, if desired. Setting up batch acquisition is as simple as identifying the sample list and specifying sample location.

What's more, StreamSelect is fully integrated into MassHunter Acquisition software, making method development a breeze.



How Much Could Your Return on Investment Be with StreamSelect?



To find out, use our easy StreamSelect ROI calculator. Simply answer a few quick questions about your method, LC/MS use, and sample volume, and watch how your savings can add up.

Try it now at www.agilent.com/chem/streamselect-roi-calculator

StreamSelect ROI calculator

See what your return on investment could be with the StreamSelect LC/MS system.

<p>How many hours a day do you use a single LC/MS?</p> <p>18</p>	<p>How long is your method? (min) (injection-to-injection)</p> <p>8</p>	<p>How many samples do you want to run per day?</p> <p>850</p>	<p>Your revenue per sample (USDS)</p> <p>80</p>
---	--	---	--

How many systems do I need?

Single LC/MS	StreamSelect 2-Stream	StreamSelect 3-Stream	StreamSelect 4-Stream
7	4	3	2

How many samples can I run per system daily?

Single LC/MS	StreamSelect 2-Stream	StreamSelect 3-Stream	StreamSelect 4-Stream
135	270	405	540

Potential daily revenue per system

Single LC/MS	StreamSelect 2-Stream	StreamSelect 3-Stream	StreamSelect 4-Stream
\$10,800	\$21,600	\$32,400	\$43,200

Agilent CrossLab: Real insight, real outcomes

CrossLab goes beyond instrumentation to bring you services, consumables, and lab-wide resource management. So your lab can improve efficiency, optimize operations, increase instrument uptime, develop user skill, and more.



Learn more:

www.agilent.com/chem/streamselect

Buy online:

www.agilent.com/chem/store

Find a local Agilent customer center in your country:

www.agilent.com/chem/contactus

U.S. and Canada

1-800-227-9770

agilent_inquiries@agilent.com

Europe

info_agilent@agilent.com

Asia Pacific

inquiry_lsca@agilent.com

For Research Use Only. Not for use in diagnostic procedures.
This information is subject to change without notice.

© Agilent Technologies, Inc. 2019
Published in the USA, February 26, 2019
5991-3663EN

